



What's New in **SYSPRO 8** For Manufacturing to Keep You Ahead of The Game

FACTSHEET

End-to-End Manufacturing Lifecycle Management

From planning and scheduling to publishing, collecting, tracking and analysis, SYSPRO Manufacturing Operations Management solution provides complete manufacturing lifecycle management designed to optimize and improve your end-to-end manufacturing operations.

Together with SYSPRO ERP, this Manufacturing Execution System (MES) offers cost and quality control of manufacturing operations for job shop, batch production, production line, and mixed mode environments.

SYSPRO Manufacturing Operations Management solution helps manufacturers:

- Measure performance to attain world-class standards of operation for overall equipment effectiveness (OEE), total effective equipment performance (TEEP) and overall labor effectiveness (OLE)
- Increase productivity and lower costs by minimizing loss within a business
- Optimize operational efficiencies through an improved workflow of core manufacturing activities: schedule; publish; collect; track; analyze; and improve
- Connect machines and other devices to digitize factories and gain a competitive advantage.

Convert Quotes to Jobs More Successfully

SYSPRO 8 offers a job nesting capability to assist customers who operate in the **Fabricated Metals and Industrial Machinery and Equipment industries**.

By nesting multiple jobs utilizing the same raw material or components in SYSPRO's Job Nesting capability you can maximize output and reduce wastage to improve costing efficiency – enabling you to quote more competitively.

It manages the complexity associated with allocating a number of jobs to a specific raw material and assists in recording and accounting for the efficiencies gained or lost and the scrap or usage of that raw material. An import-export function integrates existing nesting software directly into SYSPRO. This offers enhanced resource and labor utilization to improve costing efficiency.

- Reduce wastage
- Optimize raw material usage
- Reduce the cost of operations
- Improve costing accuracy and efficiency
- Increase competitiveness in the marketplace
- Convert quotes to jobs more successfully

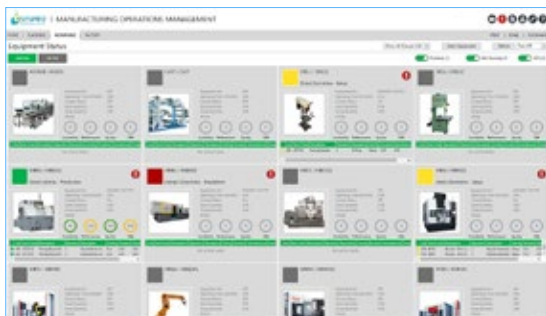
Product and Mock Recall Management

SYSPRO 8 provides full traceability through recall capabilities, including full traceability for both product and mock recalls in order to test a system. This functionality is designed to support heavily regulated industries such as Food and Beverage, Automotive Parts and Accessories, Electronics, Plastics and Rubber, and Packaging.

The product and mock recall functionality enhances traceability capabilities by delivering an effective means of managing product traceability in a recall process, as well as regularly evaluating the system through mock recalls to satisfy regulatory requirements.

This management tool allows organizations to:

- Test the traceability of a products system and verify that the product traceability process is effective and can be carried out within the required time limit
- Identify and action all activities that need to occur within a specific time period during a recall
- Undertake mock product recalls on a regular basis to improve the system
- Store mock product recall data for compliance and traceability audits
- Track and quarantine stock which is spoiled, hazardous or of inferior quality
- Retrieve sub-standard, flawed or potentially unsafe goods from customers.



Improved Product Lifecycle Management

Recorded Dates is a new feature in the Lot Maintenance Program which has been introduced to help you better manage the lifecycle of your products and satisfy the requirement for a unique range of recorded dates that often need to be linked to a product. This is specifically pertinent to regulatory requirements for industries such as Food and Beverage.

By increasing the number of date fields recorded against a lot traceable item in SYSPRO 8, you now have the ability to record up to five different dates – such as Manufactured, Deliver Before, Best Before, and Use By – against that item.

Mobile Shop Floor Data Collection

Espresso Shop Floor Data Collection provides a mobile solution for capturing all production-related transactions directly on the shop floor through the use of mobile devices. In this way, operators are directed to their work-to-lists, have insight into job specifications and are presented with a single point-of-entry for recording all their production progress.

- Input manufacturing transactions directly on the shop floor to eliminate dual capturing and reduce errors typically caused by manual data capture
- Benefit from accurate, paperless and up-to-the-minute tracking and monitoring of your manufacturing operation process
- Record the transactions associated with production against the production plan
- Increase visibility, control, monitoring and administration of immediate variance management.



Read
Analyst Report



Find out
More

Contact Us

To learn more about our company, products and services visit www.syspro.com