

## SOLUTION FACTSHEET

# Container Tracking for SYSPRO



The Container Tracking Module provides visibility across the complex supply chain for companies who deal internationally, import goods for distribution, or import raw materials for use in the manufacturing process.

This solution helps monitor, manage and track shipments via air, land and while at sea, so businesses can stay abreast of inventory even before it reaches the warehouse. For increased control, CTM allows companies to leverage flexible shipment and container building by weight or volume. The system makes it easy to track and manage multiple purchase orders and shipments for fewer container loads and vessels, saving the organization time and money. Companies gain even more efficiency by tracking from supply chain source through final destination and taking ownership as soon as the container is closed.

The Container Tracking Module consists of three functional areas:

- Release matrix
- Container management
- Voyage management

## Part 1 – Release matrix

Upon receipt of the advance shipment notice from the supplier or manufacturer, the release matrix provides visibility into all purchase orders by lines that are awaiting shipment. Items can be selected in full or partial quantity with the option to change order quantities. Each release has expected dates, as well as expected departure and arrival ports.

Purchase Or.	PO Line	Stock code	Stock description	Quantity in.	Quantity re.	Quantity od.
000181	1 A110		15 Speed Mountain Bike Boys	1,000,000...	0.000000	1,000,000...
000181	2 A111		15 Speed Mountain Bike Girls	1,000,000...	0.000000	1,000,000...
000181	3 A112		15 Speed Mountain Bike Ladies	1,000,000...	0.000000	1,000,000...
000181	1 A110		15 Speed Mountain Bike Boys	1,000,000...	0.000000	1,000,000...
000181	2 A111		15 Speed Mountain Bike Girls	1,000,000...	0.000000	1,000,000...
000181	3 A112		15 Speed Mountain Bike Ladies	1,000,000...	0.000000	1,000,000...
000181	2 A201		Bicycle Chain and Lock	1,000,000...	0.000000	1,000,000...
000187	1 A200		Bicycle Pump	1,000,000...	0.000000	1,000,000...
000187	2 A201		Bicycle Chain and Lock	1,000,000...	0.000000	1,000,000...

Purchase	PO Line	Stock code	Stock description	Quantity in.	Quantity re.	Quantity li.	Quantity av.
000113	28 PC201		Green Paint for Fence	200,0000...	0.000000	0.000000	200,0000...
000113	29 PC209		White Paint for Fence	200,0000...	0.000000	0.000000	200,0000...
000113	30 PC208		Timbers	200,0000...	0.000000	0.000000	200,0000...



# Container Tracking for SYSPRO

## SOLUTION FACTSHEET

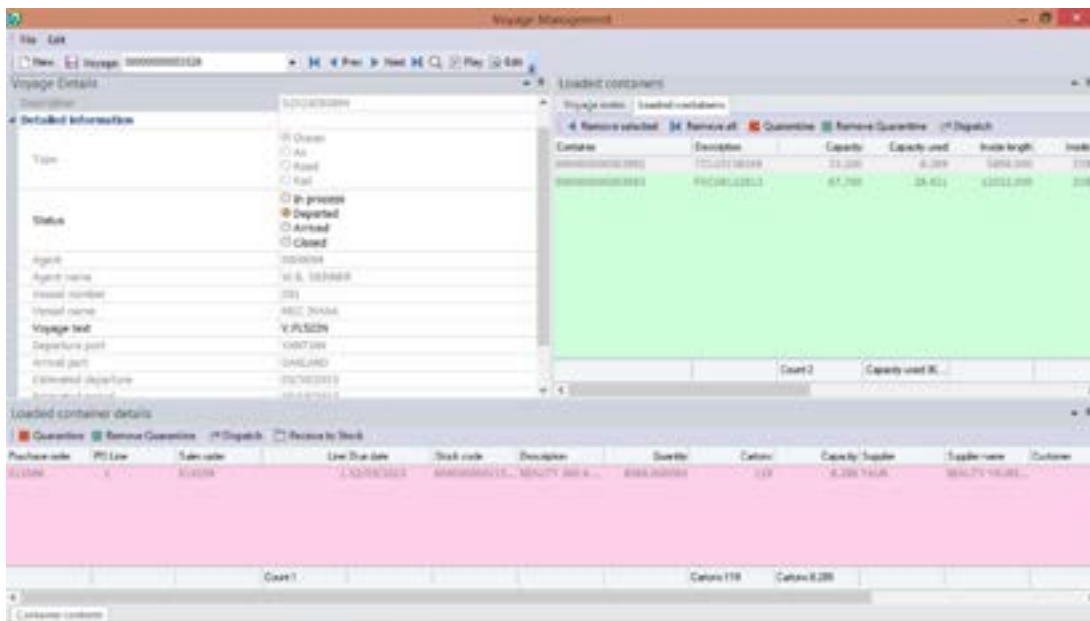


### Part 3 – Voyage management

The voyage tracking management allows multiple containers to be combined into a single voyage or shipment number and allows disposition at either the container or detail line level. The voyage information can be road, rail, air or ocean, and the organization can disposition the voyage as requiring a customs quarantine or hold.

Managing all of the elements associated with the supply chain source can be a time consuming function. Voyage management provides organizations with the ability to track all from one centralized view.

Analysis of data can provide charting element costs, elapsed time to port, number of containers shipped, number of units per month, less than or full containers and vendor performance. This information can be filtered by port of origin, shipper, port of arrival, or time frame in addition to other elements.



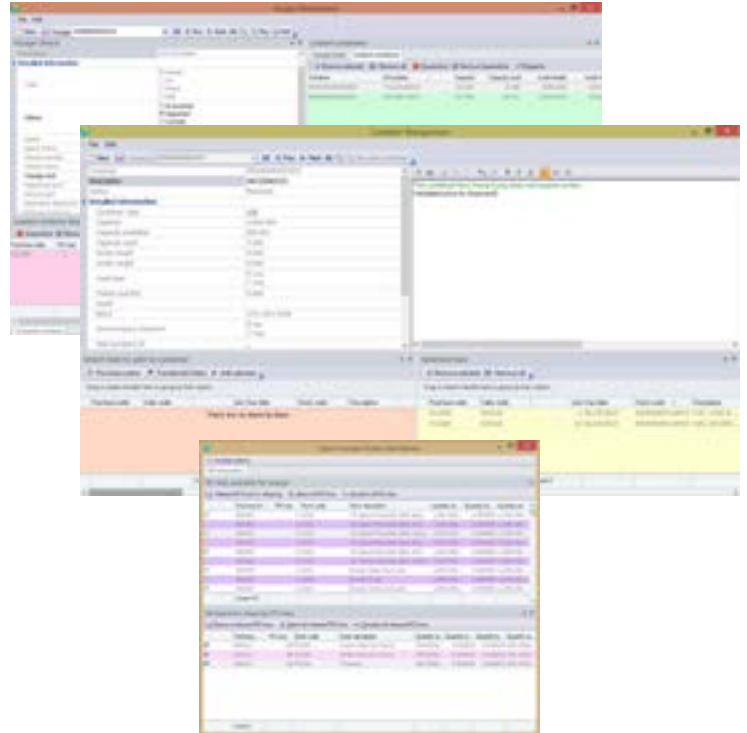
# Container Tracking for SYSPRO

## SOLUTION FACTSHEET



### The benefits of Container Tracking for SYSPRO

- Shipment tracking at order line level or in summary allows information to be analyzed for strategic or operational decision making.
- Because of long lead times, knowledge of where inventory is and when it is expected improve ontime delivery and full shipment delivery.
- Knowing where goods are, where they came from. Early detection of delays helps improve customer service < recording departure and arrival city information allows for the analysis of product origin and location of the greater demand.
- Vendor performance measurement- knowing when containers actually ship and measurements against vendor promised shipment dates.
- System allows the setup of landed cost elements, while at the same time, considering FOB shipments. This allows users to know what landed cost elements contribute to standard costs.
- Better communication and reduced mistakes of information between different departments in different locations.
- Having the shipping and the financial data in a single enterprise solution ensures a single source of the truth.



For more information, contact us at:

Tel: 714.437.1000

Email: [info@us.syspro.com](mailto:info@us.syspro.com)